

Delta-Q Charger Upgrade, 5700/7700

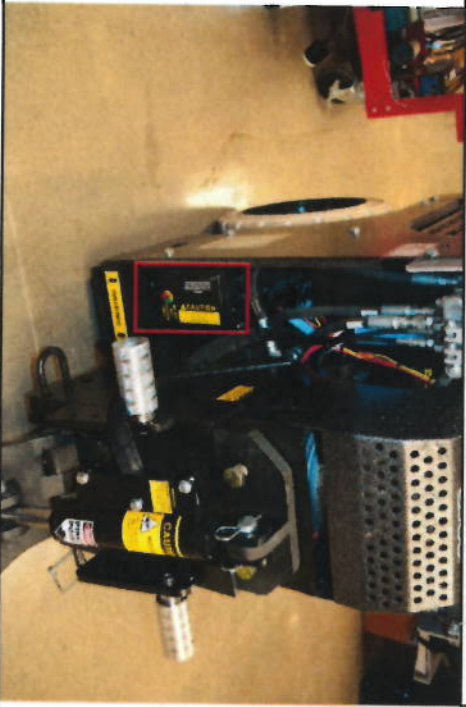
402678 Rev B

Check
 Work
 Verify

Disclaimer: Delta-Q charger should only be used with AGM batteries.

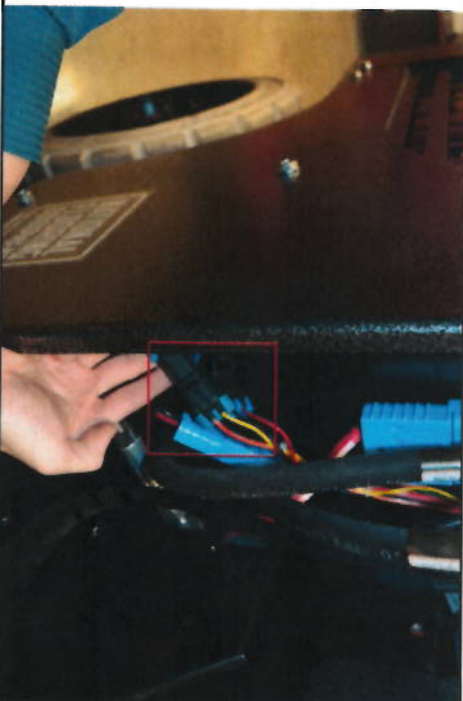
1

The charger is located in the bottom left pocket of the machine when looking from the front.



2

Unplug the black connector with the orange and yellow wires from the black connector with the black and white wires.



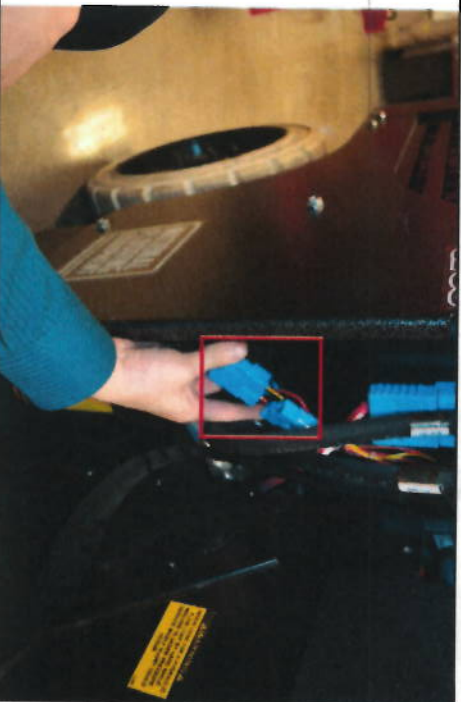
3

Unplug the connectors with the small red and black wires.



4

Unplug the long blue connectors with the large red and black wires.



Delta-Q Charger Upgrade, 570017700 402678 Rev B

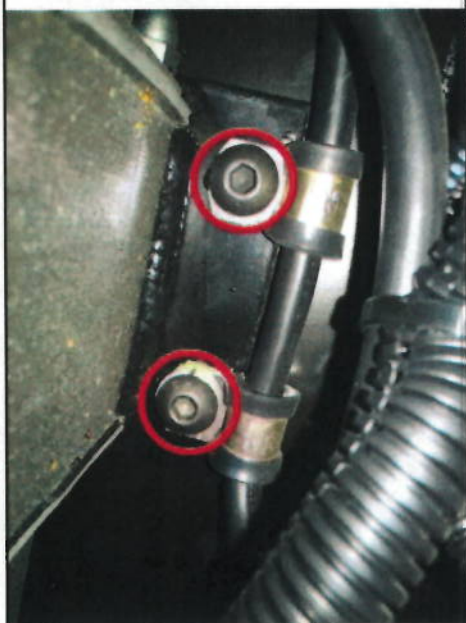
Check Work Verify

Disclaimer: Delta-Q charger should only be used with AGM batteries.

5 The location of the screws (2) that mount the charger onto the machine are shown below.



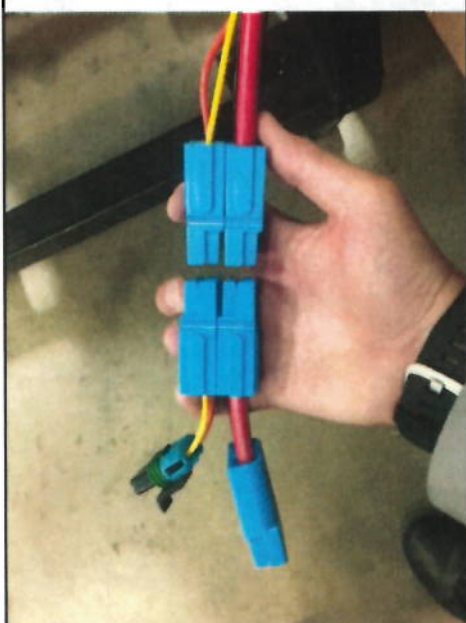
6 To remove the mounting screws: (1) Remove the front screw first; allow the charger to pivot down. (2) Ensure fingers are not under the charger, then remove the back screw.



7 Remove the charger from the machine. **CAUTION:** To avoid personal injury, be cautious while lifting the charger. It weighs approx. 42 lbs.



8 If machine has a four-pole connector (left), use the adapter shown (right).



Delta-Q Charger Upgrade, 5700/7700

402678 Rev B

Check Work Verify

Disclaimer: Delta-Q charger should only be used with AGM batteries.

9

Before inserting Delta-Q charger, ensure metal mounting plate is on the left (towards the outside of the machine) and the power cord is facing outward.



10

Power cord will need to be wrapped around the side of the charger. Line up the prongs of the cord with the edge of the mounting plate. Power plug may vary.



11

Place wire clamps onto power cord. They should line up with the mounting holes.



12

Insert Delta-Q charger. Align plate to the two screws and tighten with the two nuts. Place all additional wires and cords on the right side of the charger.



Delta-Q Charger Upgrade, 570017700 402678 Rev B

Check Work Verify

Disclaimer: Delta-Q charger should only be used with AGM batteries.

13 Place all additional wires and cords on the right side of the charger. Make sure the following wires are sticking out of the charger.



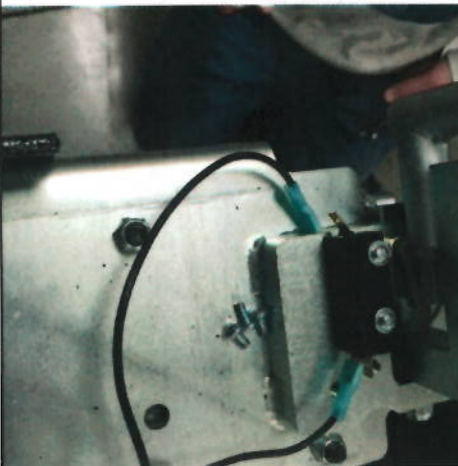
14 Disconnect the (2) big blue connectors bolted on the front.



15 Lift hood of machine; unplug seat harness if applicable.



16 Disconnect (2) wires on the left valve bracket assembly.



Delta-Q Charger Upgrade, 5700/7700

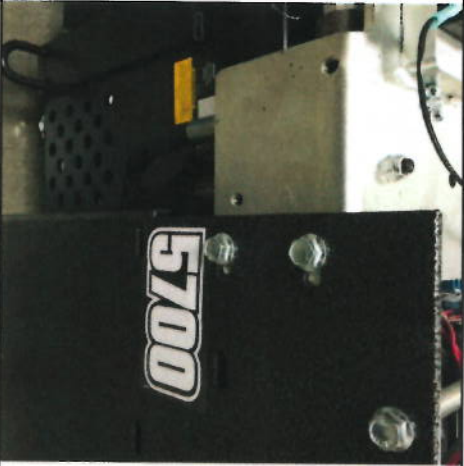
402678 Rev B

Check Work Verify

Disclaimer: Delta-Q charger should only be used with AGM batteries.

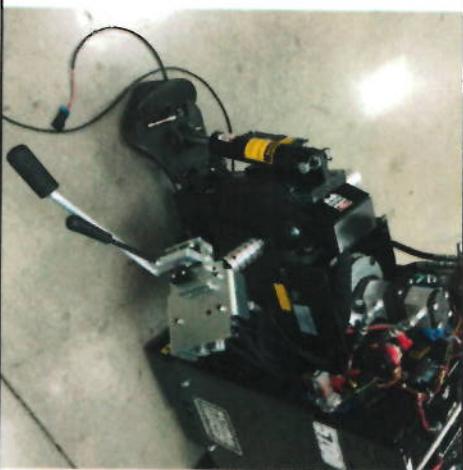
17

Remove (2) bolts on left valve bracket assembly.



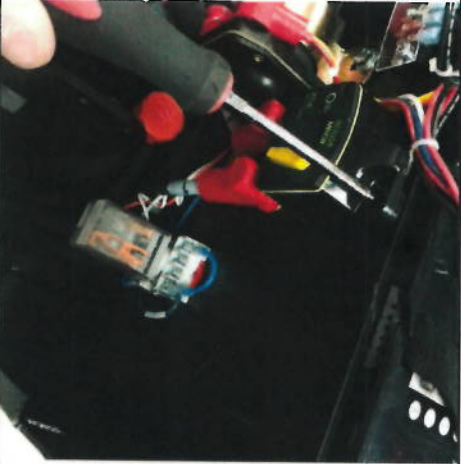
18

Lower assembly so that it rests parallel to the ground.



19

Remove (3) bolts on the circuit breaker.



20

Remove relay.



Delta-Q Charger Upgrade, 5700/7700 402678 Rev B

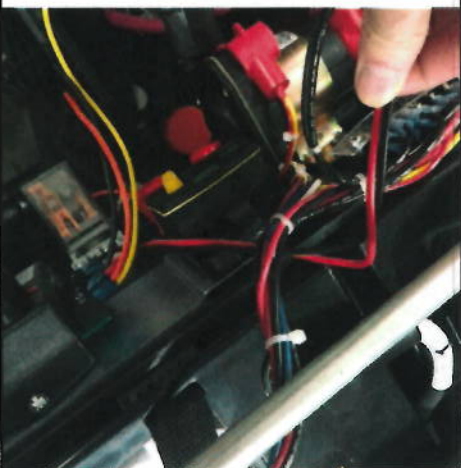
▲ Check
 □ Work
 ○ Verify

Disclaimer: Delta-Q charger should only be used with AGM batteries.

21 Place LVI plate in between the frame and circuit breaker and orient as shown; screw (3) bolts back into place.



22 Route metripack with black and red wires behind the harness and battery wires and across to the other side of the machine where the charger is.



23 Connect the male metripack (red and black wires) from the LVI to the female metripack (red and black wires) pigtailed with the charger blue connector.



24 Locate stand-alone female metripack connector.



Delta-Q Charger Upgrade, 5700/7700

402678 Rev B

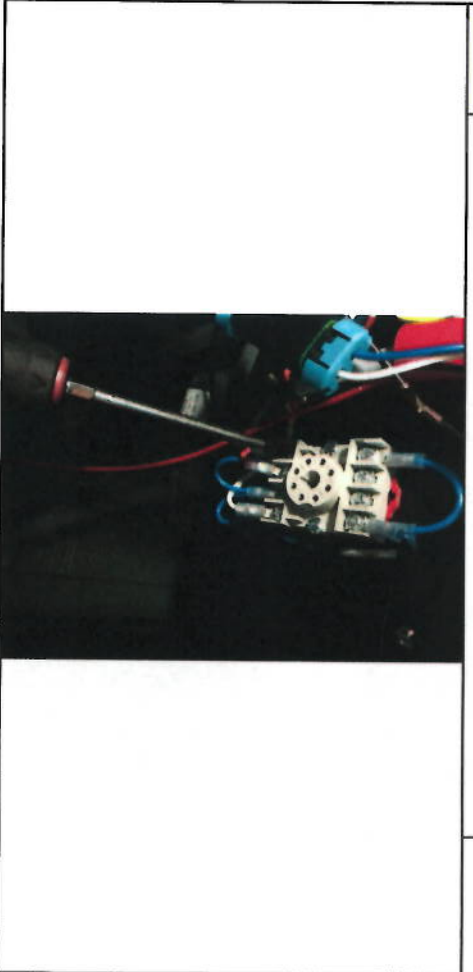
Check
 Work
 Verify

Disclaimer: Delta-Q charger should only be used with AGM batteries.

25 Connect the female metripack to the male metripack (red and black wires) from the machine on the charger side.



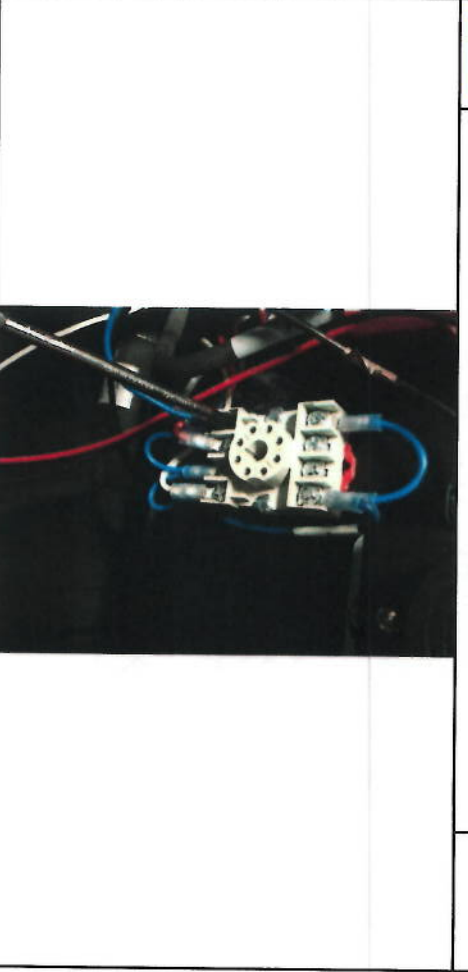
26 Remove black wire from the bottom left terminal.



27 Fold wire over itself and seal with electrical tape.



28 Attach the blue wire from the LVI to where the black wire was just removed at the bottom of the box.

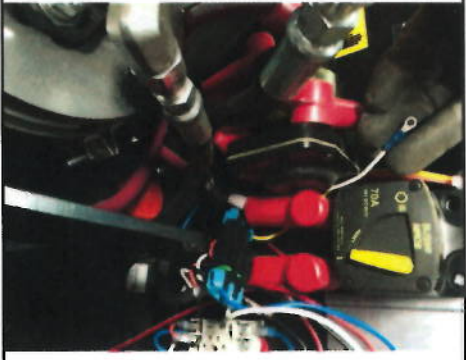


Delta-Q Charger Upgrade, 570017700 402678 Rev B

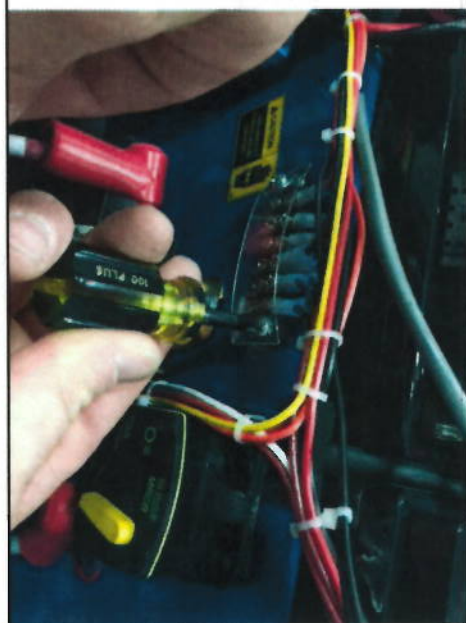
Check
 Work
 Verify

Disclaimer: Delta-Q charger should only be used with AGM batteries.

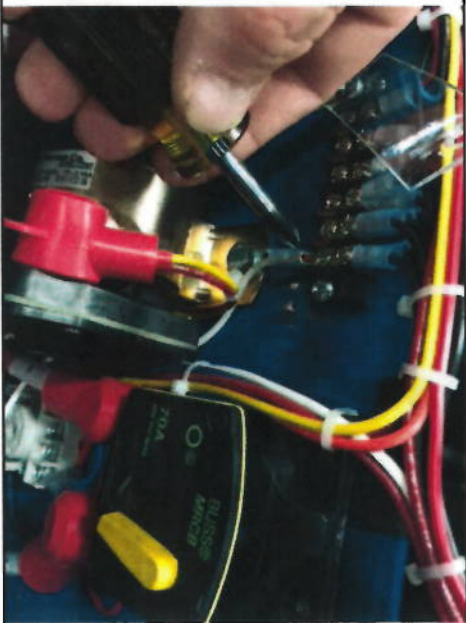
29	Run the white wire from the LVI behind the large red wire connected to the circuit breaker.
-----------	---



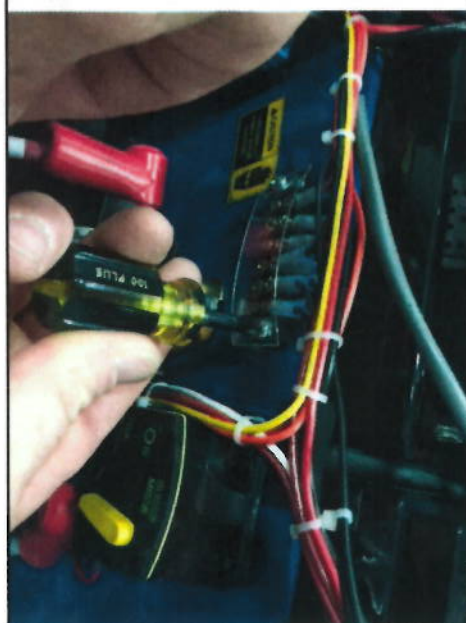
30	Unscrew furthestmost right screw on the clear casing over terminal strip. Unscrew sixth screw from the left on the bottom half of the terminal.
-----------	---



31	Run the white wire to the sixth screw on the bottom half of the terminal. Re-place screw; tighten.
-----------	--



32	Screw terminal case back into place.
-----------	--------------------------------------



Delta-Q Charger Upgrade, 5700/7700

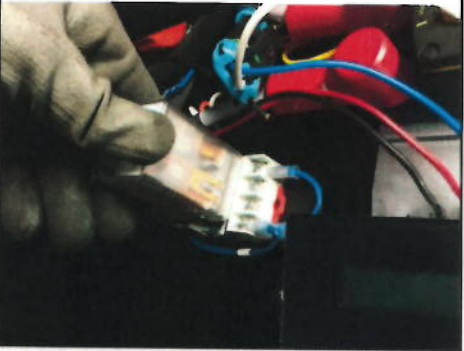
402678 Rev B

Check Work Verify

Disclaimer: Delta-Q charger should only be used with AGM batteries.

33

Re-install relay.



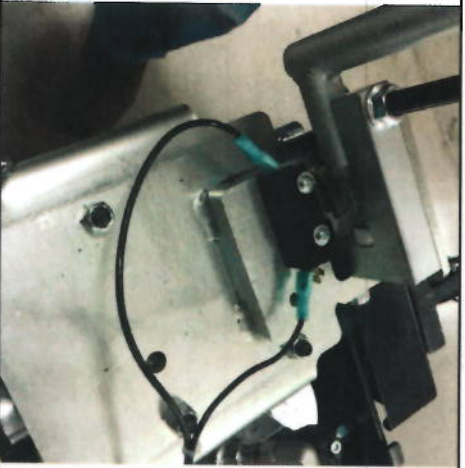
34

Re-install left valve bracket assembly.



35

Re-attach wires to left valve bracket assembly.



36

Locate wire harness with the thermal probe from the Delta-Q charger.

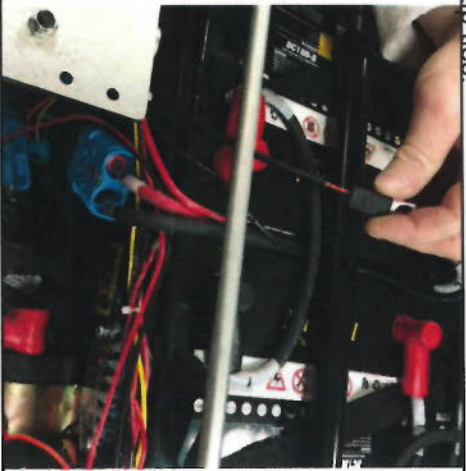


Delta-Q Charger Upgrade, 5700/7700 402678 Rev B

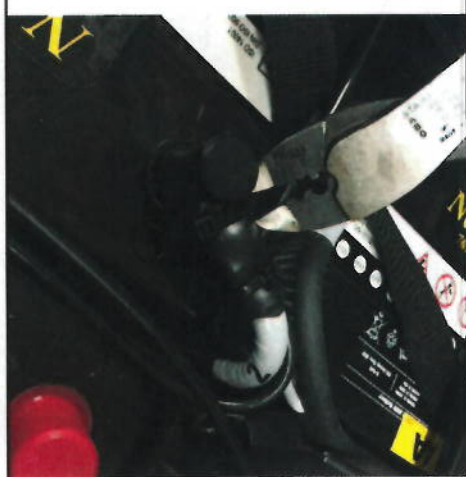
 Check  Work  Verify

Disclaimer: Delta-Q charger should only be used with AGM batteries.

37 Run the thermal probe behind the hoses and harness, under the metal bar and wires, then over the second bar and up to the negative battery terminal with the black boot and zip ties.



38 Cut zip ties on the battery boot.



39 Unscrew bolt and place thermal probe.



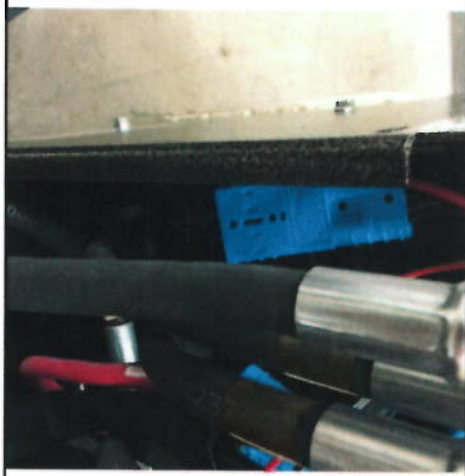
40 Re-place boot and new zip ties. Clip the extra length off the zip ties.



Check Work Verify

Disclaimer: Delta-Q charger should only be used with AGM batteries.

41 Connect the charger blue connector to the blue connector from the machine.



42 Lift hood and then lower over machine; connect seat harness if applicable.



43 Connect the (2) big blue connectors bolted on the front.



